

NL919



NEUMEIER

Technical data

engine Cummins B3.3, Tier III
power 45kW/2200 rpm
operating weight 5600 kg
max. breakout force 52 kN
volume of bucket 0,9 m³
rated load 1600 kg
articulation angle 35°
tyre size 16/70-20

Min. turning radius 4830 mm
dumping clearance 2460 mm
wheel base 2200 mm
max. travelling speed (2 gears) 24 km/h
max. tractive force 42 kN
dumping reach 905 mm
dimensions (LxWxH) 5500 x 1960 x 2800 mm



www.neumeier-gmbh.com

Your local dealer:

NEUMEIER GmbH

Boehmerstr. 10

D-93437 Furth im Wald / Germany

phone +49 9973 8466-0

fax +49 9973 8466-19 -20

mobile +49 175 592 7777

email info@neumeier-gmbh.com

NL919 with 4-in-1 bucket

dumping clearance 2450 mm
dumping reach 780 mm
operating weight 5,9 to
dimensions 5700x1960x2800 mm



NL919 with side-unloading bucket

dumping clearance 2420 mm
dumping reach 940 mm
operating weight 5,7 to
dimensions 5560x1960x2800 mm



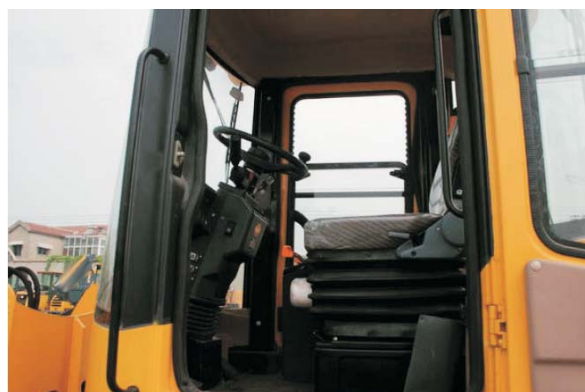
NL919 with agriculture clamp

min. clamp diameter 800 mm
dumping clearance 2550 mm
dumping reach 1690 mm
operating weight 6 to
dimensions 6070x1950x2800 mm



NL919 with logging clamp

min. clamp diameter 300 mm
max. clamp diameter 400 mm
dumping clearance 2820 mm
dumping reach 1545 mm
operating weight 5,8 to
dimensions 5800x1950x2800 mm



Dimensions

